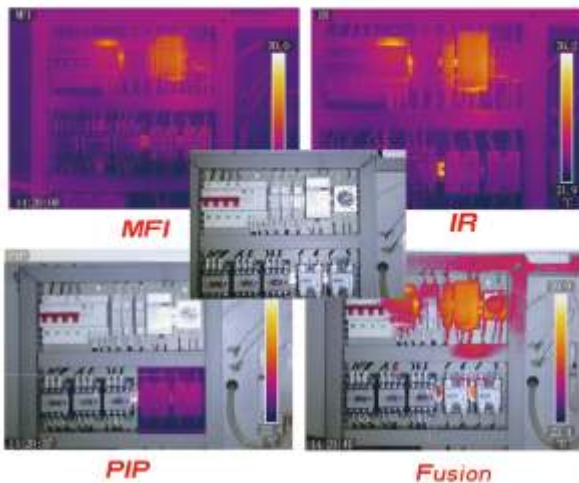


**DETECCIÓN
DE FIEBRE
SIN CONTACTO
CON TERMOGRAFÍA
INFRARROJA**





removable IR lens

Optional Lens : 7 ° , 12 ° and 48 ° are available .

| Items | WR384 | WR640 |
|----------------------------------|--|---------------------------|
| Detector type | Uncooled FPA micro-bolometer | |
| Array size/format | 384 x 288 | 640x480 |
| Field of view/Min focus distance | 24°×18°/0.3m | |
| Spatial resolution (IFOV) | 1.13mrad | |
| Focus | Manual | Auto focus / Motor |
| Frame frequency | 50Hz | 25Hz |
| Thermal sensitivity (NETD) | ≤0.06°C@30°C | |
| E- Zoom | 1-4 x adjustable focusing | 1-8 x adjustable focusing |
| Spectral range | 8-14um | |
| Built-in CCD camera | 5 megapixel pixels, with one LED illumination | |
| LCD display | 4.3" TFT LCD, 800×480, suitable for daylight | |
| Temperature ranges | -20°C - +650°C , extend to 1000 °C as optional | |
| Accuracy | ± 2 °C or ± 2% | |
| Emissivity | See manual or material table | |
| Measurement functions | Multiple measurement spots & Regions of interest Hot / cold spot detection , isotherms, profiles, differences | |
| Transmissivity | Depending on distance , humidity | |
| Color alarms | Above and below user defined temperatures | |
| Image control | 12 color displays , image adjustment (auto / manual) | |
| Setup functions | Date/time, temperature unit °C/°F/°K, language | |
| Image/video/storage | Image operation and storage 16G Micro SD ,up to 32G | |
| Image format | JPEG | |
| Voice annotation | Voice recording 60 seconds , store with image | |
| Text annotation | Can input pre-setup version or direct input version | |
| Bluetooth , Wi-Fi | Yes | |
| Laser pointer | Red , laser Class 2,IEC60285 | |
| Battery type | Li-Ion, rechargeable | |
| Battery operating time | 4 hours continuous operation | |
| Storing temperature | -40°C - +70°C | |
| External power | 12V DC | |
| Operating temperature | -15°C - +50°C | |
| Humidity | ≤ 95 % (non-condensing) | |
| Encapsulation | IP54 | |
| Weight | < 850 g | |
| Dimension | 245 × 125 × 120 mm | |
| USB | Yes | |
| SD interface | yes | |
| HDMI | yes | |
| External power supply | DC 12V | |
| Optional lenses | 7 ° , 12 ° , 48 ° | |